

Keeping you informed

Update on Peckfield Landfill Site

February 2017

Our aim is to protect and improve the environment so everyone can enjoy the benefits of a clean, safe and healthy place to live, work and play.

We issue environmental permits that set standards for those operating waste management facilities including landfills like the site at Peckfield.

The operator, Caird Peckfield Ltd (CPL) must comply with this in order to minimise their impact on the environment and the local community.

We are aware of the ongoing landfill gas odours being experienced by the residents of Micklefield and we have officers investigating the situation.

What has been going on since the last newsletter?

Our Environment Management Officers have continued to attend the site on a regular basis and have issued CPL with the information they need to operate within the conditions of their permit.

Current situation - odour problems

There has been a marked rise in the number of odour reports since the end of December 2016. On the 5 January 2017 our Environment Management Officers undertook a methane emissions survey at Peckfield Landfill site to determine the extent of methane surface emissions.

We identified that leachate wells and an internal slope of waste within cell 11a of the CPL Landfill site are the source of the odours. The surface emission concentrations contour plot (diagram overleaf) shows where surface emissions are detected.

The results from this survey have been used to determine the required improvements CPL need to take and, in line with our Enforcement & Sanctions guidance, we have issued CPL with an Environmental Permitting (England and Wales) Regulations 2016, Regulation 36 Notice. This requires the company to undertake specific steps to minimise the release of methane emissions within cell 11a which we believe have contributed to odour issues around Micklefield. By way of explanation, the notice requires CLP to:

Step 1: reduce the steepness of the internal waste slope.

Step 2: install a cover over the wastes that have been re-profiled in step 1. The purpose of the cover is to reduce the escape of gas from the surface.

Step 3: install gas collection. The purpose of the gas collection is to collect it before it can escape to the surface.

To check that steps 2 and 3 are working we have set a surface methane concentration limit.

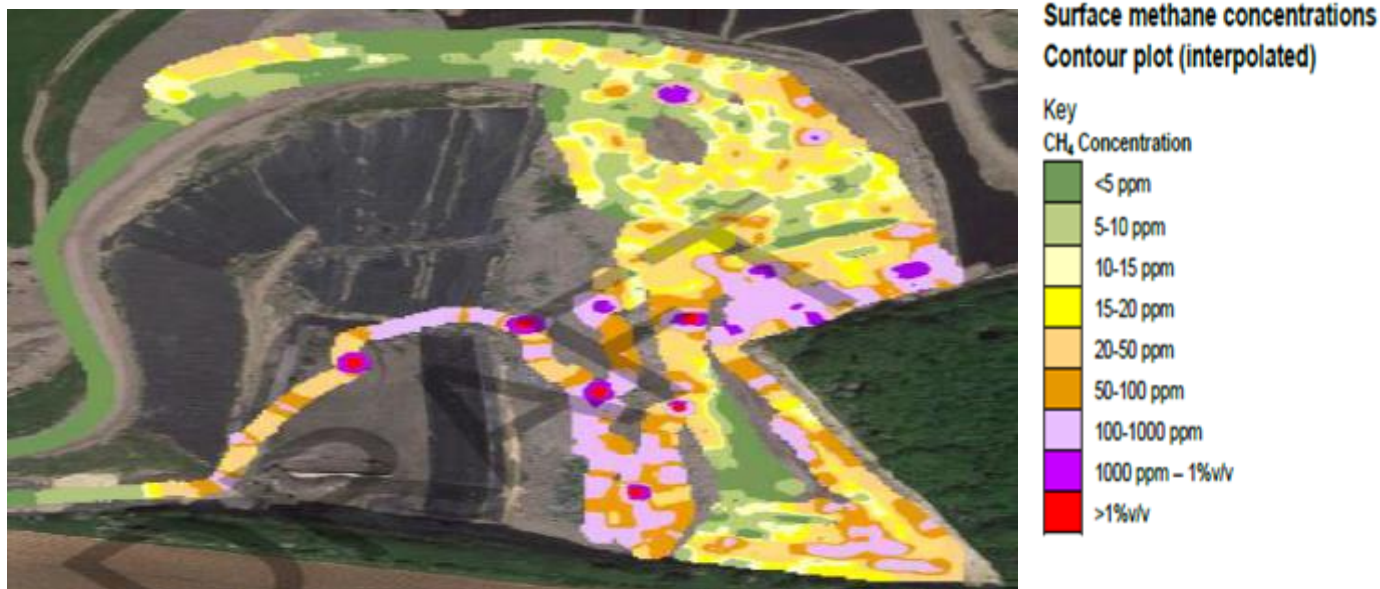
Step 4: reduce the height of the leachate chambers to allow for step 5

Step 5: seal the leachate chambers. This will be demonstrated by the methane concentration limit around the chamber.

Step 6: carry out a surface methane emissions survey to demonstrate that the works required by the notice have been carried out to the required standards.

CPL are currently progressing with the essential works to minimise the release of landfill gas from the site and are required to complete the specific steps 1-5 as detailed above by the 14 March 2017. We will closely monitor the programme of works to completion.

The Environment Agency is unable to share any more detail on this particular issue currently due to it being an ongoing regulatory investigation. We will continue to keep you informed but will not be able to give out information that may prejudice any future action we may take.



The diagram is the surface emissions concentrations contour plot. It shows that elevated levels of methane emissions are being released, especially around the leachate infrastructure. These can be easily identified as they show up red on the contour plot.

Incident Reporting

The Environment Agency would like to thank all who have taken time to report the odour problems experienced within the village. The number of evidenced odour reports we have recorded for the past three months are **17 during November, 75 during December, and 229 during January.**

An increasing number of reports are now being received via email, however we do prefer to receive your reports via our free-phone pollution incident hotline so that we can get as much detail as possible to help ensure the extent of the problem is understood. We need to know time, location odour was detected, its frequency, intensity and if possible, a description of what the odour is. We will also ask you for your email address so that we can keep you informed.

Please note that whilst CPL undertake the required improvements on site, further general waste odours maybe generated. Whilst efforts will be made by CPL to minimise the impact of these works, it is likely that landfill gas will continue to escape until the works are completed. We believe that as each of the steps is completed there should be a marked improvement in preventing the release of surface methane emissions, which should reduce the risk of landfill gas odours being detected within the village.

Activities on site

We refer to different areas of the site as numbered cells to identify one area from another, as each cell has different activities associated with it as it is prepared, filled and managed.

Since our last newsletter, the engineering works on constructing Cell 11b have been completed by the operator and waste disposal activities are underway within this cell. It is the final cell to be constructed for the deposit of 'general' waste.

The operator has recently completed the installation of landfill gas infrastructure into Cell 11b. This work to install horizontal pipelines within the waste mass, will ensure that surface methane emissions from this active cell are minimised. Landfill gas infrastructure has also been installed on each leachate chamber within Cell 11b and active landfill gas extraction from these chambers has now commenced, this should ensure that methane emissions from these chambers are minimised.

Future activities for CPL to complete

The sidewall engineering around Cell 11a and Cell 11b has been suspended until the Spring/Summer when weather conditions become more favourable to undertake engineering works. As part of these engineering works an additional amount of colliery tailings from the area of the site known as the Eastern Neb, will need to be extracted and utilised as part of the sidewall engineering. Once the sidewall engineering works have been completed around Cell 11a, then progress will be made to complete this cell and install a fully engineered cap and install deep vertical landfill gas wells.

Although the engineered capping works have been completed on Cell 9a & 9b and 10a, further work is necessary to complete the final restoration work. Due to the potential risk of damage to engineered cap the work necessary to complete the placement of restoration soils has been suspended until the Spring/Summer when weather conditions become more favourable to undertake engineering works. This is why you can still see the black membrane.

Installation of an additional number of deep vertical gas wells within the area of Cell 10b is to commence this Spring. Installation of these deep vertical gas wells will improve the efficiency of gas extraction within this area and ensure that surface emissions are kept to a minimum, following which installation of an engineered cap on the area of Cell 10b can be agreed.

The Eastern Neb

The area on the eastern boundary of the site, known as the Eastern Neb is closest to residential properties in the village. This cell is only permitted to accept 'inert' wastes (e.g. construction/demolition wastes), and therefore unlikely to cause odour. Amendments to the restoration requirements are being considered with the local planning authority which may result in this area becoming a habitats feature, rather than utilised for inert waste disposal.

Site Closure

In line with the planning conditions within the remit of the local authority, waste inputs into the site must cease by 2020. There is the potential however for waste inputs into the site to come to end earlier than the 2020 deadline, but this is dependent on the rate of waste input. Although the site may no longer be accepting waste after the 2020, CPL are required to actively manage landfill gas and leachate for many years and will continue to provide us with monitoring information in line with the permit, until the site is ready for surrender.

Who are we speaking to about this?

We regularly attend the site liaison group meetings and continue to keep the local community informed, along with the local MP and ward councillors.

Site Contact

Caird Peckfield Limited can be contacted on **0113 2865784** or alternatively at enquiries@peckfield.com should you have any questions or issues regarding the operation of Peckfield Landfill Site.

How you can help us

We run a 24-hour incident hotline. You can use this number to tell us if the site is causing a nuisance. Our hotline number is **0800 807060**. In order to gather reliable evidence we need reports to be timely and accurate. **For all other enquiry's you can contact us by emailing micklefield@environment-agency.gov.uk or by telephone on 03708 506506**